

# Leader



Say hello to your daemon, a

## Pine Marten

Just like Lyra and her daemon, you have the qualities of a brave, determined and inspiring leader.

You're creative and open-minded – and you'll take a stand for what you believe is right.

**Travel with your daemon through the Museum that inspired Lyra's alethiometer.**

Find your Pine Marten daemon in each Gallery to explore stories of people just like you:



a **courageous queen**



a **curious king**



eight **pioneering female scientists**



Discover

## Queen Elizabeth I's Fortune-teller

This is Queen Elizabeth I's astrolabe – a map of the stars you can hold in your hand. One of its many uses was casting horoscopes to predict the future.

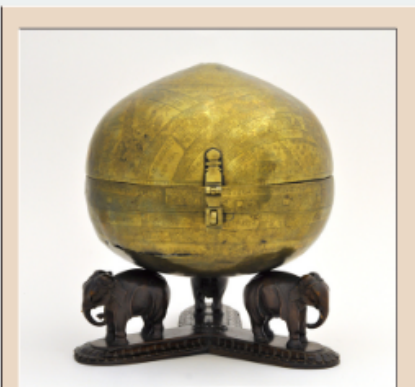
Did good Queen Bess consult this astrolabe to ask the universe for answers – maybe even to uncover the plans of anyone plotting against her?

Just like Lyra with her alethiometer, only those with specialist skills could ask the question – and interpret the answer. But they had to use it wisely – anyone caught using the occult to find out state secrets could end up behind bars.



Do

## Can you find these animals who have made their home in the Top Gallery?



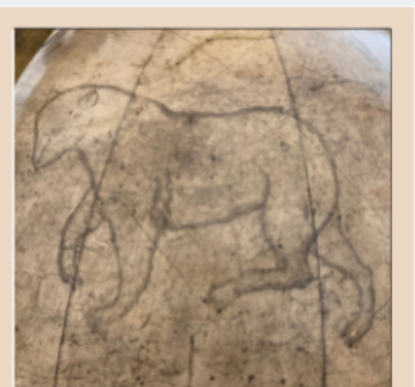
Elephant

What are the elephants carrying on their backs?



Lion

How many lions are holding the sphere?



Bear

Can you spot a centaur and a crown too?



# Entrance Gallery



## King George III's Microscope

Like Lyra's friend Dr Mary Malone with her amber spyglass, King George III used this elaborate microscope to discover things in the natural world we can't see with the naked eye.

George III was the first British monarch to have lessons in subjects like physics, chemistry, astronomy and maths – what we now call science.

And he was keen to share his love of learning with others. We know he used this microscope to teach his children – and let visitors to his court use it as well.



## Scientist Robert Hooke drew animals he saw through his microscope. Can you guess what they are?



In a Spin

Hint: Its web catches the insect in the next picture.

Answer: Spider



In the Air

Hint: It's named for what it does: \_\_\_ through the air.

Answer: Fly



On the Ground

Hint: These insects love crawling all over a picnic!

Answer: Ant

Discover

Do

# Basement



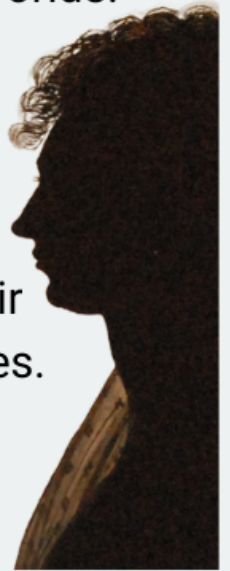
Discover

## Women in Science

From Lyra and Dr Mary Malone to Ma Costa and Mrs Coulter, strong women lie at the heart of the action in Lyra's worlds.

Ranging from pulsars and penicillin to computer programming and photography, our tribute to Women in Science celebrates the contribution of eight remarkable women. All leaders in their field, their courage, skill and determination drove new discoveries.

They include the only UK woman to win a Nobel Prize in the sciences, a pioneer in computer programming, innovators in early photography and an expert in earthquakes.



Do

**Congratulations! You've completed your challenges and you're ready to enter Lyra's Worlds. Can you find:**



Lyra's Dress



Lyra's Alethiometer



Pine Marten Daemon