

Visionary



Say hello to your daemon, a

Snow Leopard

Just like Lord Asriel and his daemon, you have the qualities of a mysterious visionary.

You're imaginative, elusive and daring – and you play by your own rules.

Travel with your daemon through the Museum that inspired Lyra's alethiometer.

Find your Snow Leopard daemon in each Gallery to explore stories of people just like you:



a **stargazer**



a **mystic** at the royal court



an **entrepreneur** who transformed how we communicate

Top Gallery

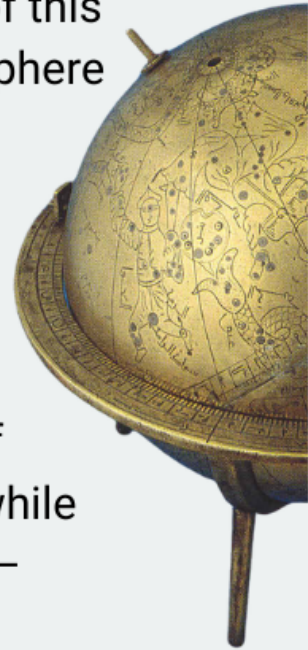


Discover

A 'God's-eye' View

In *His Dark Materials*, Lord Asriel is on a mission to create a 'Republic of Heaven', so we think he would approve of this spherical 'sky map' – the fixed stars engraved on a sphere (think of the Earth hidden at the centre inside).

Take a look at the constellations: they're drawn as you'd see them from the outside, looking back at the Earth. But, as it was made in Persia in the 1300s CE, the maker followed the Islamic tradition. The head of every human figure is turned towards the observer, while the rest of the body "looks" inside towards the Earth – the 'God's-eye' view of Lord Asriel's vision.



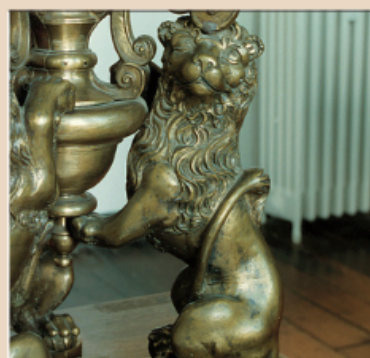
Do

Can you find these animals who have made their home in the Top Gallery?



Elephant

What are the elephants carrying on their backs?



Lion

How many lions are holding the sphere?



Bear

Can you spot a centaur and a crown too?

Entrance Gallery



Royal Magician's Holy Table

Lord Asriel's allies include angels – but these heavenly messengers were just as real to Queen Elizabeth I's multi-talented adviser: Dr John Dee. This is a marble copy of a table Dee used to discover the universe's secrets by talking with angels.

Both science and magic were used to explore the natural world in Tudor times, and Queen Elizabeth I often went to John Dee for advice – he even chose her coronation date. As legend has it, the storm that wrecked the Spanish Armada was a spell cast by Dee. But it's more likely his expertise as an early meteorologist meant he just got the weather forecast right!



Can you find these objects that were used for science and magic?



Magic Charm

How many tails does this mermaid have?



Dragon Fire

Is this Chinese dragon a clock, a torch or a dish?



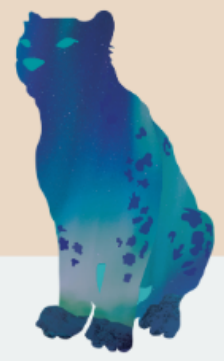
What's Up, Doc?

Who used to use this crystal ball?

Discover

Do

Basement



Discover

Making Waves

Guglielmo Marconi was an entrepreneur with a simple vision: to connect the world through wireless technology. Like Lord Asriel, he didn't play by the rules – or take no for an answer.

From experimenting in his parents' attic to the showmanship of his first public demonstrations in Victorian London, Marconi's hands-on approach revealed the unseen world of radio waves – and its potential to make money. He built a successful company, and in 1922 helped found the BBC. And his ideas live on today. Do you use mobile phones, Wi-Fi, GPS or Bluetooth? They all trace their origins back to Marconi's devices and ideas. Take a look at our *Making Waves* display: mobile technology – meet the relatives!

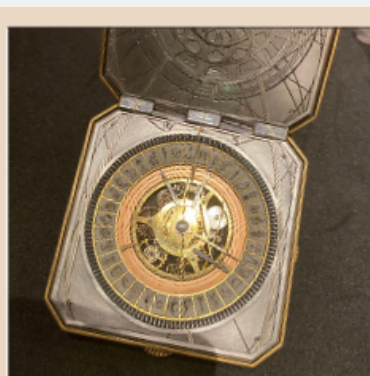


Do

Congratulations! You've completed your challenges and you're ready to enter Lyra's Worlds. Can you find:



Lord Asriel's Coat



Lyra's Alethiometer



Snow Leopard Daemon