

Gardens
Libraries &
Museums

UNIVERSITY OF OXFORD

Visitor Map & Guide

Discover Oxford's top attractions and centuries of culture, science and natural history



**FREE
ADMISSION
TO MOST SITES**

Gardens Libraries & Museums

UNIVERSITY OF OXFORD

Discover the University of Oxford's amazing history and incredible treasures at its Gardens, Libraries & Museums.

These are sites steeped in history, where writers and researchers found inspiration and where scholars explored new specimens.

Today they remain places of research and discovery, where you can learn about amazing works of art, history and science, enjoy exhibitions and events, visit cafés and shops, or simply take time out in these beautiful spaces.

Most sites are located in the centre of Oxford, within walking distance, so it's easy to visit one or many.

Admission is FREE to most sites but donations are welcome.

Visitor Information

Getting here

The easiest (and greenest) way of getting to our sites in Oxford is via public transport.

By Bus: Most buses into the city centre stop at the High Street or Gloucester Green, which are in close walking distance to all sites (except Harcourt Arboretum).

Buses X38, X39, X40 and 45 stop at Harcourt Arboretum.
www.oxfordbus.co.uk
www.stagecoachbus.com

By Rail: Oxford Station is a 10-15 minute walk to all sites (except Harcourt Arboretum). Buses into Oxford run from Oxford Parkway Station.

By Bicycle: Bike racks are available at or near all sites.

By Car: Parking in central Oxford is limited – the Park & Ride bus service is recommended: www.oxford.gov.uk/parkandridesites

Free parking is available for ticket holders at Harcourt Arboretum. Blue Badge parking is available (first-come, first-served) across Oxford.

Accessibility

We're open to all, with a range of facilities for visitors with additional needs, including lift access, accessible toilets, audio guides and hearing loops. Guide/assistance dogs are welcome at all our sites.

Please visit individual websites for the most up-to-date access guides and accessibility information.

www.accessguide.ox.ac.uk

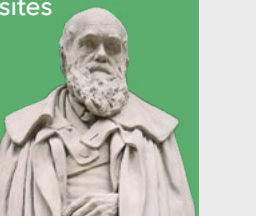
Booking tickets

Tickets for Bodleian tours, the Oxford Botanic Garden and Harcourt Arboretum can be purchased online or on-site. Entry to the Ashmolean is free, but pre-booking exhibition tickets is recommended.

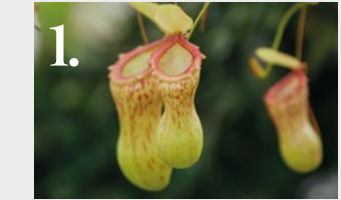


Enjoy
EXHIBITIONS
DISPLAYS
EVENTS
WALKS
COURSES
WORKSHOPS
LECTURES
TALKS
FAMILY ACTIVITIES
LATE-NIGHT EVENTS

Visit our websites to find out what's on



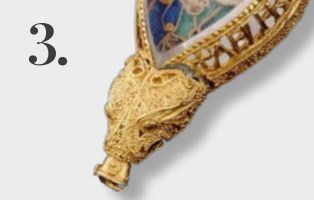
Top highlights not to be missed



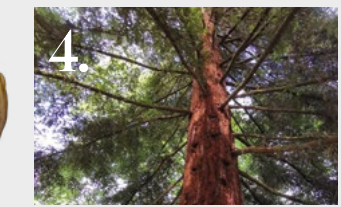
1. **Oxford Botanic Garden**
Carnivorous plants
Nepenthes pitcher plants dangle amongst the plant collections.



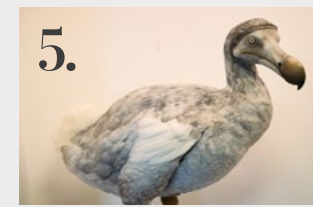
2. **Pitt Rivers Museum**
Witch in a Bottle
A glass flask that is reputed to contain a witch!



3. **Ashmolean Museum**
The Alfred Jewel
Rare Anglo-Saxon relic linked to King Alfred the Great - a gold and crystal masterpiece.



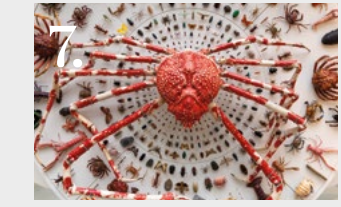
4. **Harcourt Arboretum**
Giant Redwood Trees
Giant sequoias (*Sequoiadendron giganteum*) planted in around 1855.



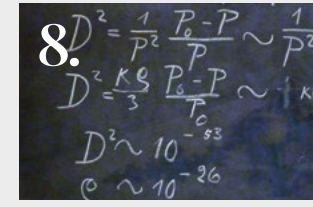
5. **Museum of Natural History**
Oxford Dodo
Find out why the Oxford Dodo is so famous!



6. **Ashmolean Museum**
The Hunt in the Forest
Paolo Uccello's 15th-century masterpiece depicting a hunting scene.



7. **Museum of Natural History**
Japanese Spider Crab
The largest living arthropod features in new displays.



8. **History of Science Museum**
Einstein's Blackboard
Blackboard from Einstein's 1931 talk in Oxford on relativity and the Universe.



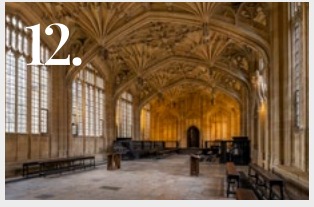
9. **Pitt Rivers Museum**
Haida Totem Pole
11-metre-tall totem pole from British Columbia's Haida community.



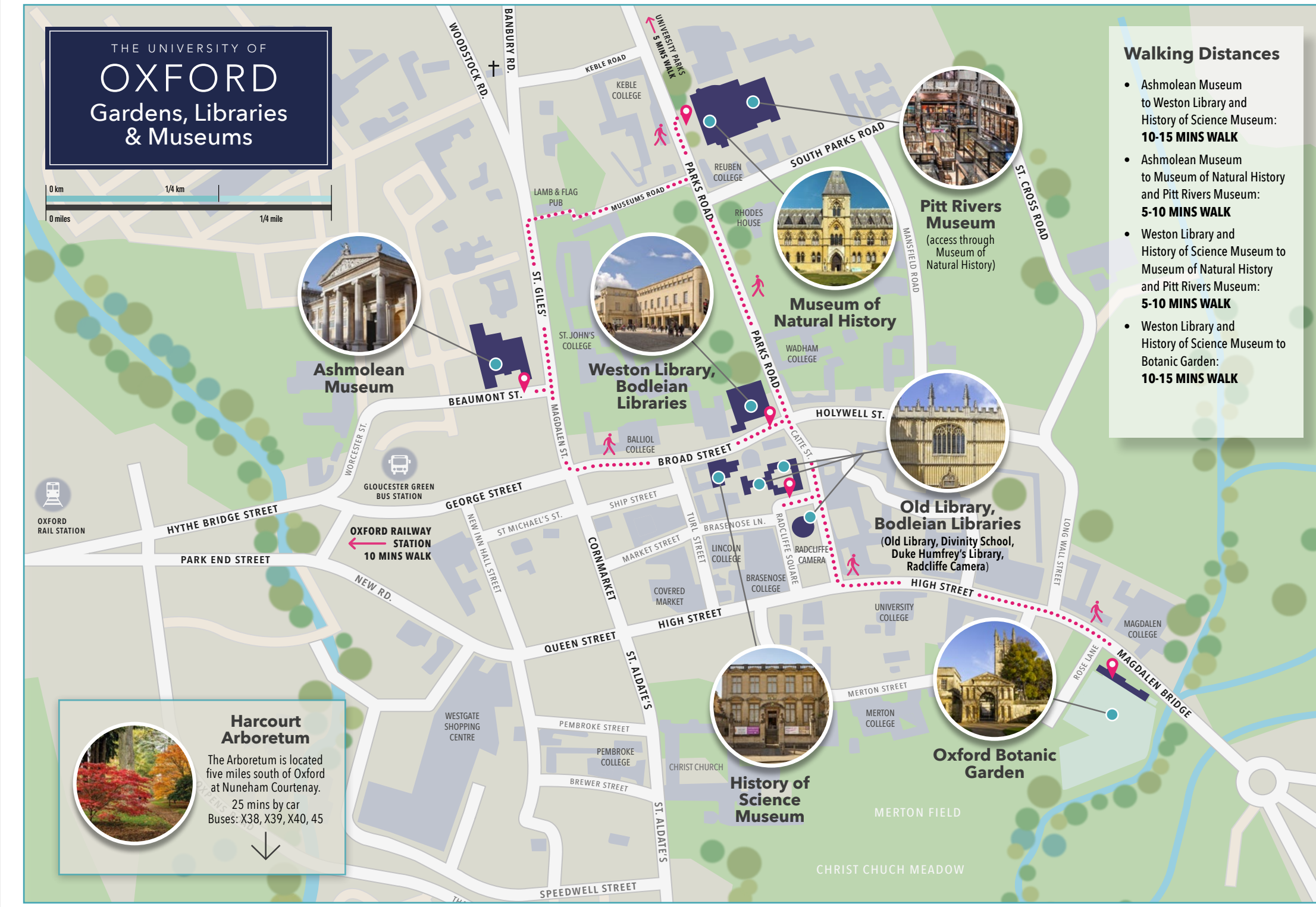
10. **Old Library, Bodleian Libraries**
Duke Humfrey's Library
One of the oldest and most famous libraries in Europe.



11. **History of Science Museum**
Shah Abbas II's Astrolabe
A masterpiece of science and art made for the Persian Shah Abbas II.



12. **Old Library, Bodleian Libraries**
Divinity School
A famed 15th-century marvel of Gothic architecture.



- ### Walking Distances
- Ashmolean Museum to Weston Library and History of Science Museum: **10-15 MINS WALK**
 - Ashmolean Museum to Museum of Natural History and Pitt Rivers Museum: **5-10 MINS WALK**
 - Weston Library and History of Science Museum to Museum of Natural History and Pitt Rivers Museum: **5-10 MINS WALK**
 - Weston Library and History of Science Museum to Botanic Garden: **10-15 MINS WALK**



Ashmolean Museum

Britain's first public museum, founded in 1683, with a stunning collection of art and archaeology

Discover...

Egyptian mummies, Anglo-Saxon treasures, Impressionist paintings, Roman sculptures and modern art on display in over 60 spectacular galleries.

Don't miss...

world-class exhibitions, the Rooftop Restaurant for great food and views of Oxford, and treasures like the 9th-century Alfred Jewel.

Visitors say...

'One of the best museums in the world!'

'Unmissable wonders...something for everyone to smile at. And it's free, just glorious!'



Old Library Bodleian Libraries

World-famous library established in 1602, located in the heart of the University

Discover...

ancient books and historic spaces (which have been the backdrop to many popular film and TV series) through guided tours.

Don't miss...

the elaborate 15th-century Divinity School or the popular 60-minute tour that takes you through the University's oldest reading room, the Duke Humfrey's Library.

Visitors say...

'Great tour, magical place, very charming. It is definitely worth visiting.'

'The very knowledgeable guides had great stories about the rich history of the library.'



Weston Library Bodleian Libraries

Modern research library, home to the Bodleian's most historic books and manuscripts

Discover...

illuminating exhibitions showcasing the Bodleian's treasures, then enjoy a break in the café overlooked by colourful bookstacks.

Don't miss...

the sacred Shikshapatri Hindu scripture, written in Sanskrit in 1826 by Shree Swaminarayan, on permanent display.

Visitors say...

'...one of my favourite libraries...there is always a really interesting exhibition as well as some more permanent treasures. The shop and café are also both really excellent.'



History of Science Museum

Unique museum in the heart of Oxford to explore where science meets art and belief

Discover...

Ingenious globes, dials and devices made to study the stars including instruments from the Islamic world, plus Marconi's radio revolution, and stories of science in Oxford.

Don't miss...

Einstein's Blackboard, an intriguing model universe, the life-saving story of penicillin and making waves with Marconi.

Visitors say...

'Stupendous museum with amazing pieces from the history of science around the world. Super fun and highly recommended!'



Museum of Natural History

Stunning 19th-century museum exploring Earth, science and nature... a favourite with families

Discover...

the huge array of animals and geological specimens, from dinosaurs and a dodo to trilobites and tarantulas.

Don't miss...

glass virus sculptures and meteorites as old as the solar system in 36 brand-new displays in the Museum's stunning centre court.

Visitors say...

'Brilliant museum for all the family. Children will love the dinosaurs and animals and there's enough to see for several visits. Highly recommend.'



Pitt Rivers Museum

World-famous museum of anthropology, ethnography and archaeology

Discover...

Indonesian deities, ancient totems and samurai swords sitting alongside objects of ritual significance, everyday domestic objects and items for tourists or trade.

Don't miss...

drawers filled with objects to intrigue and delight, thought-provoking exhibitions and innovative events.

Visitors say...

'The most interesting artifacts I think I've ever seen inside a museum. One could easily spend all day in there so leave plenty of time for your visit.'



Oxford Botanic Garden

The oldest botanic garden in Britain and an oasis in the centre of Oxford

Discover...

seven glasshouses containing tropical rainforests, the world's largest water lilies, carnivorous plants, desert cacti and alpine flora.

Don't miss...

exploring the 17th-century walled garden, a tranquil space where writers found inspiration amongst the colourful plants.

Visitors say...

'A stunning garden in the heart of Oxford. Some unusual, rare plants and flowers. Everything is well maintained, and in every season it's an explosion of nature.'



Harcourt Arboretum

130 acres of the world's rare and endangered trees, located just on the outskirts of Oxford

Discover...

great nature paths through wildflower meadows and under huge pines and ancient redwoods.

Don't miss...

bluebell woods in the spring, rhododendrons in the summer and glorious colour in the autumn... or the fascinating programme of events all year round.

Visitors say...

'The setup is very relaxed, the staff informative and the location serene.'

'Lovely place for a walk around to unwind.'

Eat, drink, shop and tour...



Food & Drink

Museum of Natural History café

Hot lunches, salads and sandwiches, with dinosaur views

Horsebox on the lawn

Hot drinks, cakes and snacks outside the Museum of Natural History

Botanic Garden pop-up café

Hot drinks, cakes and snacks

Weston Library café

Hot drinks, sandwiches and salads overlooked by library books

Ashmolean Rooftop Restaurant

Lunch and afternoon tea with city views

Ashmolean café

Hot drinks, sandwiches and salads in the vaults



Shopping

Pick up unique souvenirs and gifts

Our shops are perfect for picking up a souvenir of Oxford or to purchase unusual gifts – like a bottle of Oxford Botanic Physic Gin, a tea towel of the periodic table, or a 'Silence Please' mug.



Walking Tours

Explore Oxford with expert, accredited guides

Follow in the footsteps of famous authors, scientists, politicians and film stars in a City of Oxford Walking Tour, which will take you on an entertaining journey revealing the secrets of this historic university city.

Discover the history of the oldest university in the English-speaking world on the only official University of Oxford walking tour.

Book online at:
visit.bodleian.ox.ac.uk/tours



FREE ADMISSION

Major exhibitions are ticketed (£)

www.ashmolean.org

- Open daily 10am–5pm
- Shops, café and Rooftop Restaurant

Beaumont Street, Oxford, OX1 2PH



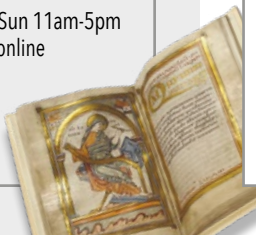
TICKETS: Tours from £10

Visit the Divinity School £2.50

visit.bodleian.ox.ac.uk

- Mon-Fri 9am–5pm, Sat 10am–5pm, Sun 11am–5pm
- Tours: book at the Weston Library or online
- Shop and Audio Guide

Broad Street, Oxford, OX1 3BG

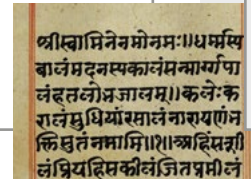


FREE ADMISSION

visit.bodleian.ox.ac.uk

- Mon-Fri 9am–5pm, Sat 10am–5pm, Sun 11am–4pm
- Shop and café

Broad Street, Oxford, OX1 3BG



FREE ADMISSION

www.hsm.ox.ac.uk

- Open Tues–Sun 12–5pm (closed Mondays)
- Shop

Broad Street, Oxford, OX1 3AZ



FREE ADMISSION

www.oumnh.ox.ac.uk

- Open daily 10am–5pm
- Shop and café
- Free architecture tours on Fridays; see website for details

Parks Road, Oxford, OX1 3PW

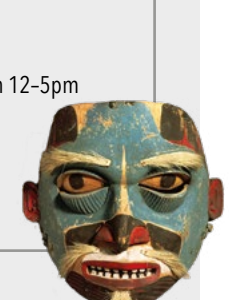


FREE ADMISSION

www.prm.ox.ac.uk

- Open Tues–Sun 10am–5pm, Mon 12–5pm
- Shop. Entrance through Museum of Natural History.

Parks Road, Oxford, OX1 3PW



TICKETS: £8 (with Gift Aid) £7.20 (standard)

£5.90 concessions/students, under-16s free

www.obga.ox.ac.uk

- Open daily from 10am. Last admission varies seasonally, check www.obga.ox.ac.uk/opening-hours
- Shop and pop-up café

Rose Lane, Oxford, OX1 4AZ



TICKETS: £8 (with Gift Aid) £7.20 (standard)

£5.90 concessions/students, under-16s free

www.obga.ox.ac.uk

- Open daily 10am–5pm (last admission 4pm) (10am–4pm November to February)
- Shop and pop-up café (seasonal opening)

Oxford Lodge, Peacock Gate, Oxford, OX4 9PX

